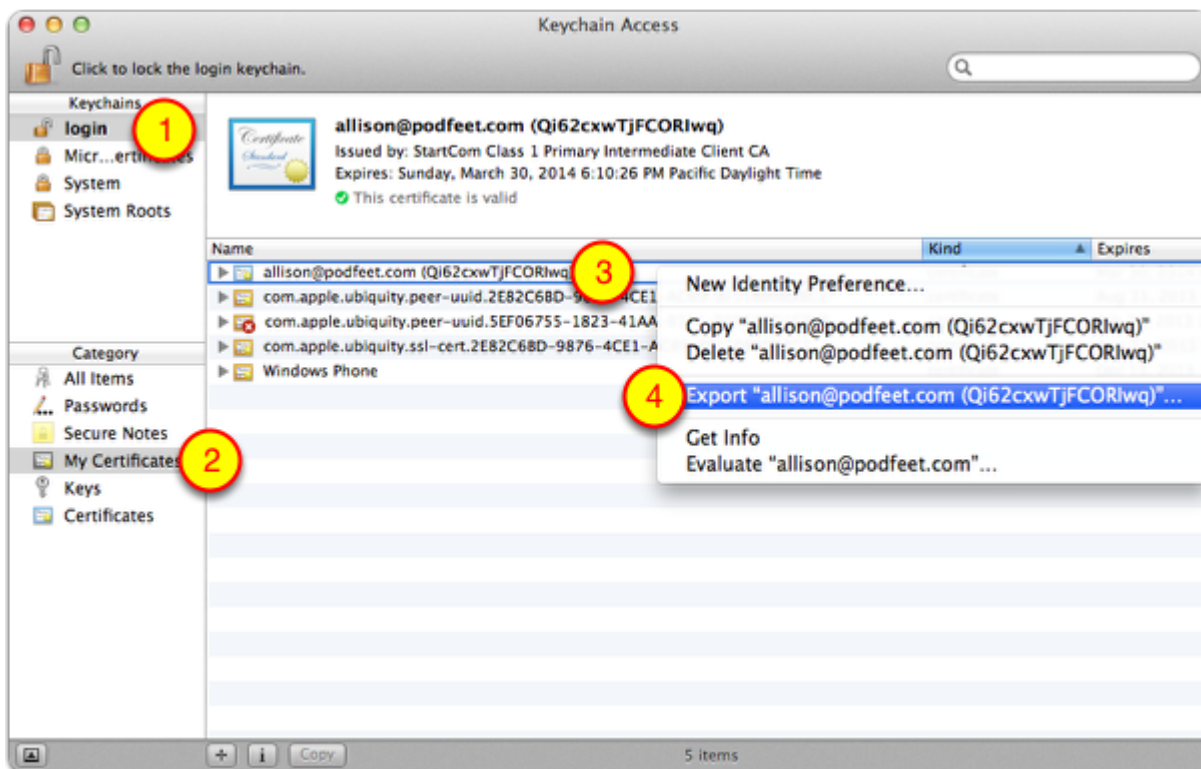


How to Export Your Cert For Use In Other Apps and Devices

This tutorial will walk you through how to export your S/MIME Certificate you created in the previous tutorial so that you can send signed, encrypted email from other applications than Mail.app, other computers and even iOS devices. This will also give you the opportunity to back up your certificate.

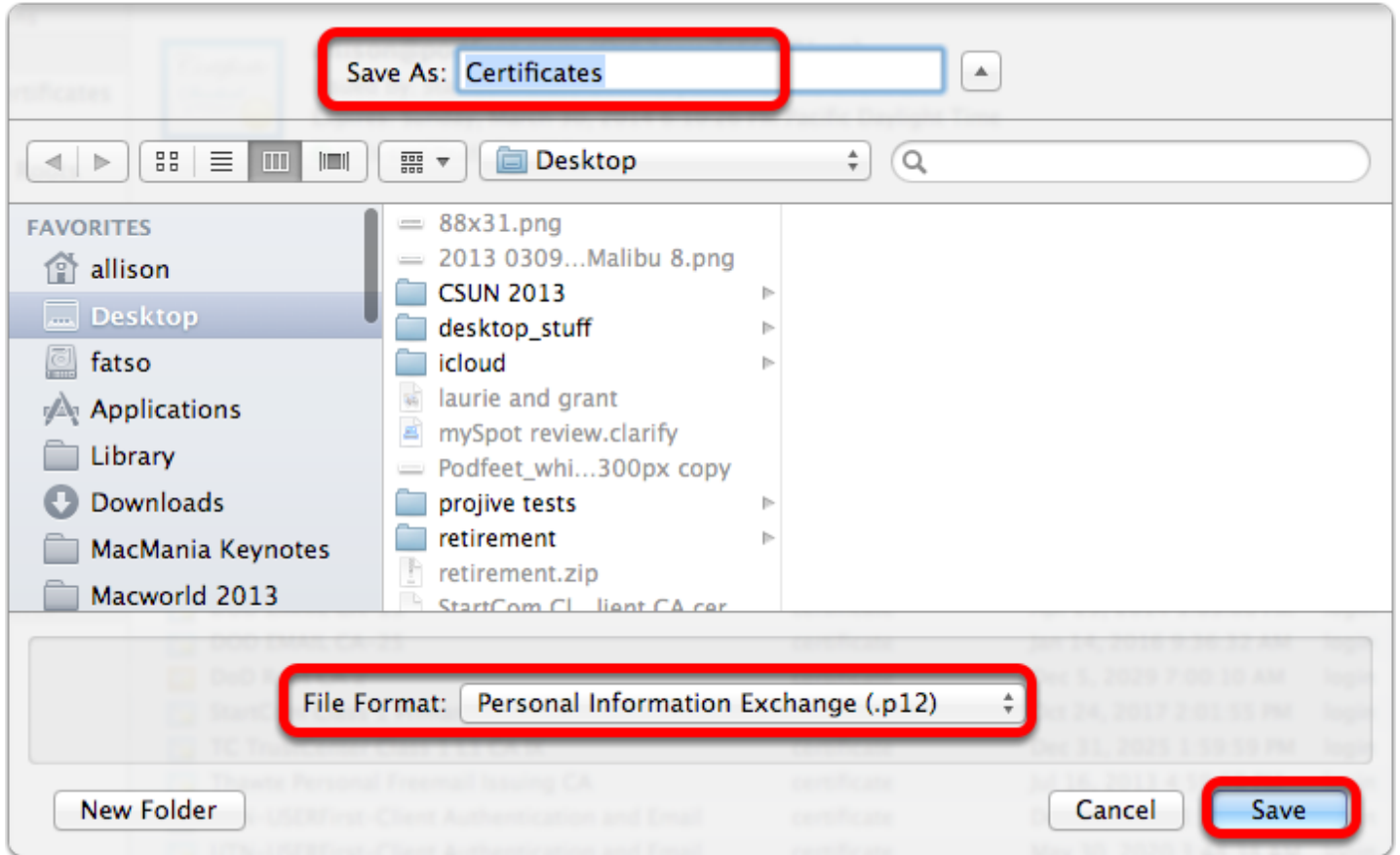
Open the Keychain Access Utility

1. Click on Login in the upper left
2. Click on My Certificates on the left sidebar
3. Right Click on the certificate that has your email address followed by a long code
4. Select Export from the popup menu



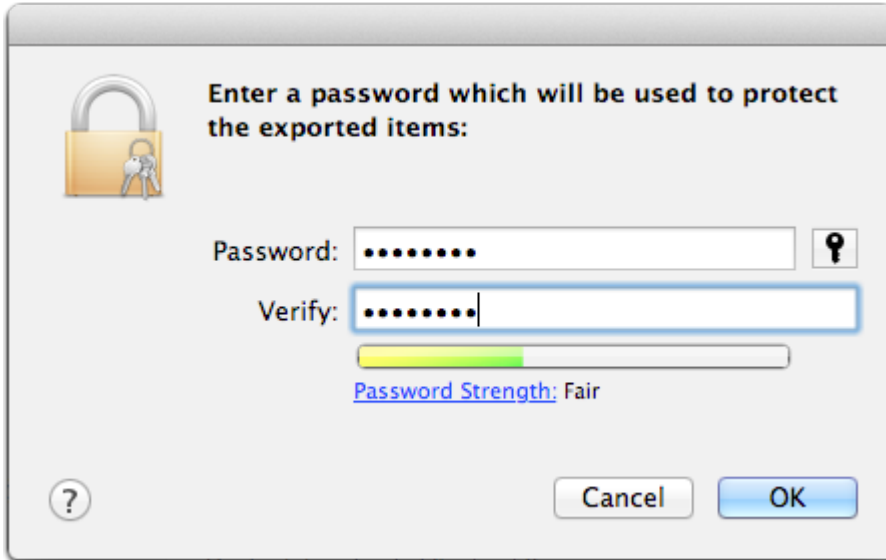
Save the Certificate to a Known Location

Make sure the File Format stays at Personal Information Exchange. If you don't see that option, go back a step and follow the instructions a bit more carefully. :-)



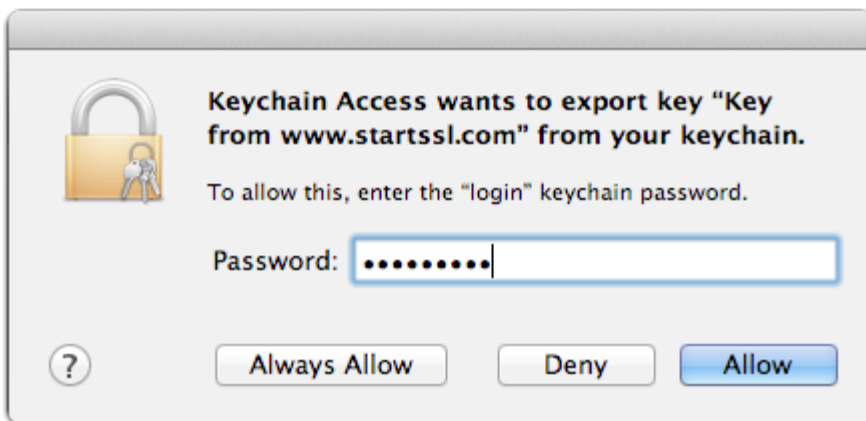
Give the File a Password

Make sure to store this password in your password manager tool of choice (you DO have a password manager tool, right?)



Give Keychain Your Admin Account Password

Keychain needs administrative permission to export the file.



Back Up your .p12 File

Note that p12 files are encrypted so they're safe to save anywhere, even Dropbox, assuming you picked a strong password!

This is the file you'll import on other devices/applications from which you want to send signed or encrypted emails (view, blown way up.)

